



Leilani Le Roux
0823336443
leilanil@louwcoetzee.co.za



Angie Passman
0827933151

angiep@louwcoetzee.co.za

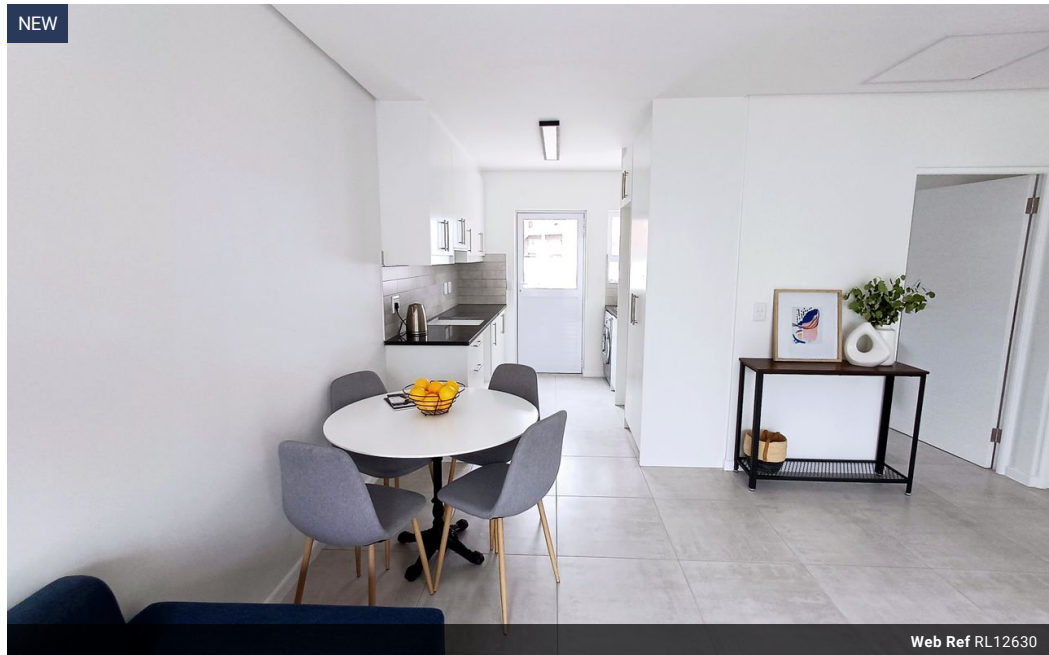
Contact Louw & Coetzee Properties

021 0003488

35 Main Road, Durbanville

2 Bedroom Flat To Let in Honeydew Country Estate

NEW



Web Ref RL12630



R12,000 pm

Lease Period 12 months
Annual Escalation -

Availability 01 Sep 2025 **Deposit** -

2 1

Modern 2 bedroom lock-up and go apartment in Honeydew

Located in the beautiful Country living Honeydew Estate, this brand new 2 bedroom apartment is up for grabs! Situated on the 1st floor with 1 full bathroom, modern open plan kitchen with granite tops, extractor fan, washing machine point, dining area, lounge with sliding doors which open to an airy balcony. Undercover parking bay for one motor + 1 x extra.

Honeydew is located nearby Optenhorst Shopping Mall, schools and Paarl Medi Clinic.

Pre paid electricity meter

Water & Mun account for tenant.

Communal pool with beautiful parks, soccer field, putt-putt course, jungle gyms, outdoor gym equipment.

Clear ITC Record.
Double Deposit.

Available: 1 September 2025.

Features

Interior

Bedrooms	2
Bathrooms	1
Kitchens	1
Recep. Rooms	1
Furnished	No

Exterior

Carports / Parkings	2
Security	Yes
Pool	Yes
Views	False