



**Riana Moller**

Non-Principal Property Practitioner  
Registered with PPRA  
(FFC 114 705 3)  
084 208 3334  
rianam@louwcoetzee.co.za

Contact Louw & Coetzee Properties

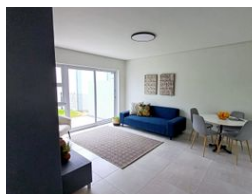
021 0003488

35 Main Road, Durbanville

## 2 Bedroom Flat To Let in Honeydew Country Estate



Web Ref RL12313



R11,500 pm

Lease Period 12 months  
Annual Escalation -

Availability 01 Jun 2025 Deposit -

🛏 2 🚿 1

### Brand new modern 2 bedroom lock-up and go apartment in Honeydew

Located in the beautiful Country living Honeydew Estate, this brand new 2 bedroom apartment is up for grabs! Situated on the 1st floor with 1 full bathroom, modern open plan kitchen with granite tops, extractor fan, washing machine point, dining area, lounge with sliding doors which open to an cozy balcony. Undercover parking bay for one motor + 1 x extra.

Honeydew is located nearby Optenhorst Shopping Mall, schools and Paarl Medi Clinic.

Pre paid electricity meter

Water & Mun account for tenant.

Fibre ready with 5meg fibre line for free!

Communal pool with beautiful parks, soccer field, putt-putt course, jungle gyms, outdoor gym equipment.

Clear ITC Record.

Double Deposit.

Available 1 June 2025

### Features

#### Interior

Bedrooms	2
Bathrooms	1
Kitchens	1
Recep. Rooms	1
Furnished	No

#### Exterior

Carports / Parkings	2
Security	Yes
Pool	Yes
Views	False