



Leandri Raats
0799774249
leandri@louwcoetzee.co.za

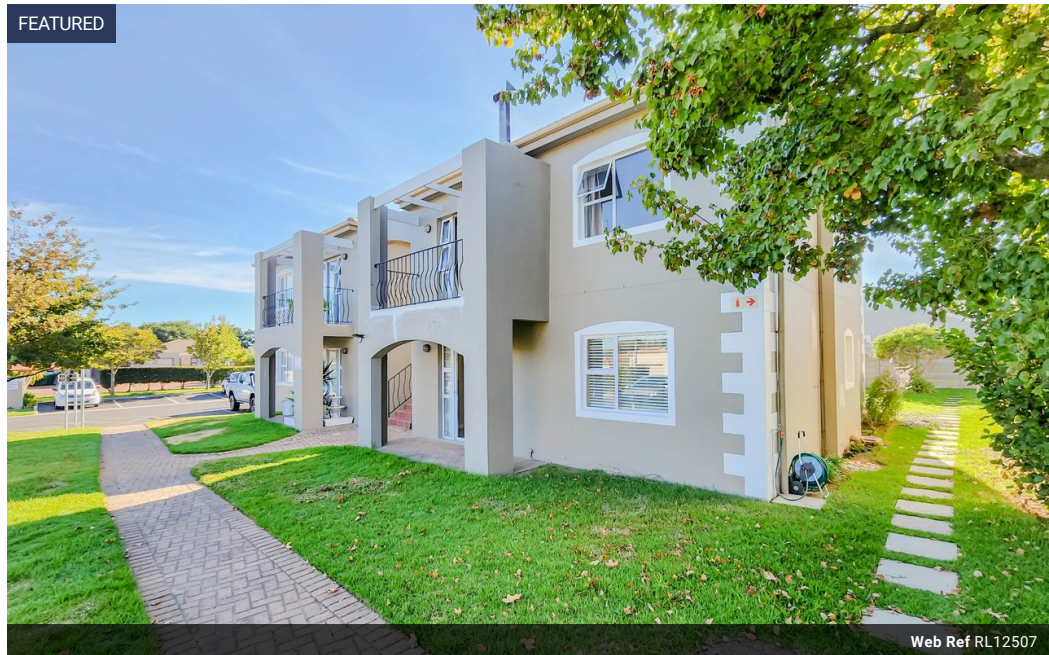
Contact Louw & Coetzee
Properties

021 0003488

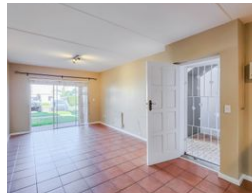
35 Main Road, Durbanville

2 Bedroom Flat To Let in Rosedale Estate

FEATURED



Web Ref RL12507



R13,500 pm

Lease Period 12 months
Annual Escalation -

Availability Immediately

Deposit -

 2  1

2-Bedroom ground floor Flat for Rent in Rosedale Estate, Goedemoed

This lovely ground floor 2-bedroom, 1-bathroom flat is located in the secure and sought-after Rosedale Estate in Goedemoed. The open-plan living area offers a comfortable space to relax, leading out onto a grassy area.

Both bedrooms feature built-in cupboards, and the bathroom includes a separate shower and bath. The flat also comes with one allocated parking bay for your convenience. The estate is secure with access control, ensuring peace of mind.

Located close to schools, shopping centres, and main routes, this property is ideal for small families, young professionals, or anyone looking for a comfortable, secure living space.

No pets allowed.

Available immediately.
Contact Leandri for a viewing.

Features

Interior

Bedrooms	2
Bathrooms	1
Kitchens	1
Recep. Rooms	1
Furnished	No

Exterior

Carports / Parkings	1
Security	No
Pool	No
Views	False

Sizes

Floor Size	69m²
------------	------