



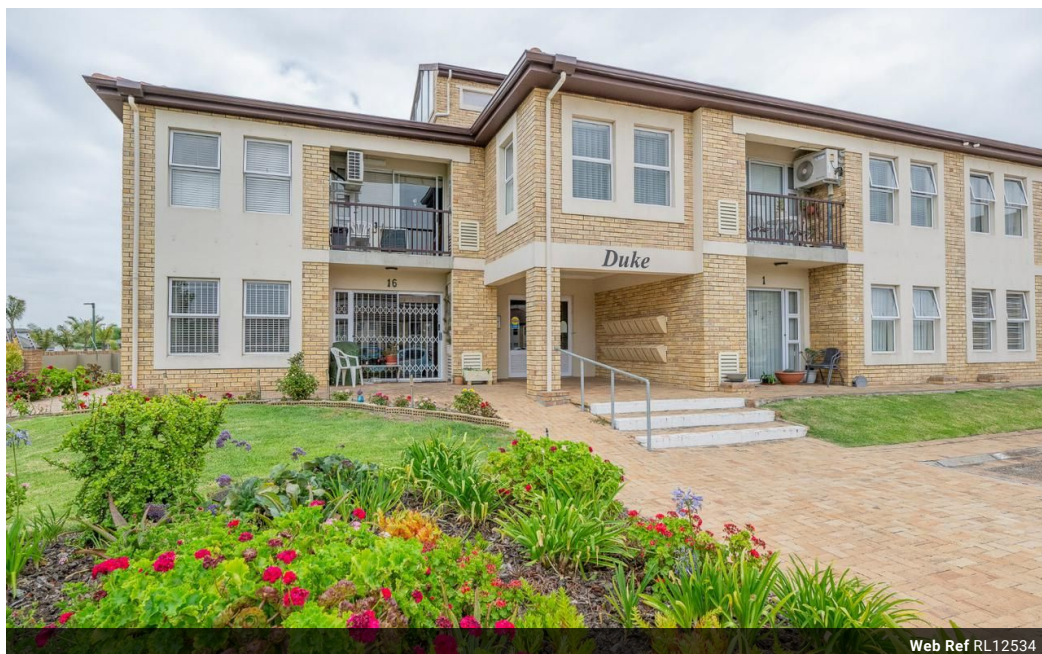
**Leandri Raats**  
0799774249  
leandri@louwcoetzee.co.za

Contact Louw & Coetzee  
Properties

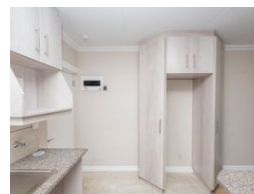
021 0003488

35 Main Road, Durbanville

2 Bedroom Flat To Let in Brackenfell South



Web Ref RL12534



R10,000 pm

**Monthly Levy** R0.0 **Monthly Rates** R0.0 **Lease Period** 12 months  
**Availability** Immediately **Deposit** - **Annual Escalation** -

 2  1  1

### Charming Apartment in Othello Retirement Village

Please note this is a retirement estate - person over the age of 50 years only.

Discover the perfect blend of comfort and convenience with this delightful 2-bedroom ground-floor apartment, located in the highly sought-after Othello Retirement Village in Brackenfell Central. This well-maintained home features two bedrooms with built-in cupboards, offering ample storage, and stylish laminated flooring that enhances the modern, welcoming atmosphere. The open-plan kitchen is fitted with granite countertops, a sleek glass-top hob, and an extractor fan—ideal for effortless and elegant everyday cooking. The bathroom is thoughtfully designed with a spacious double shower, combining practicality with a touch of luxury.

Additional conveniences include a single garage and a designated parking bay, while ample visitor parking is...

### Features

#### Interior

Bedrooms	2
Bathrooms	1
Kitchens	1
Recep. Rooms	1
Furnished	No

#### Exterior

Garages	1
Security	Yes
Pool	No
Views	False

#### Sizes

Floor Size	60m²
------------	------

#### Extras

CCTV 24-Hour Manned Electric Fencing Retirement Living Open Plan Open Stoep Extra Parking  
Blinds TV Port Prepaid Electricity Security Estate