



Coenrad Willemse
Non-Principal Property
Practitioner
Registered with PPRA
(FFC 113 600 5)
0843856453

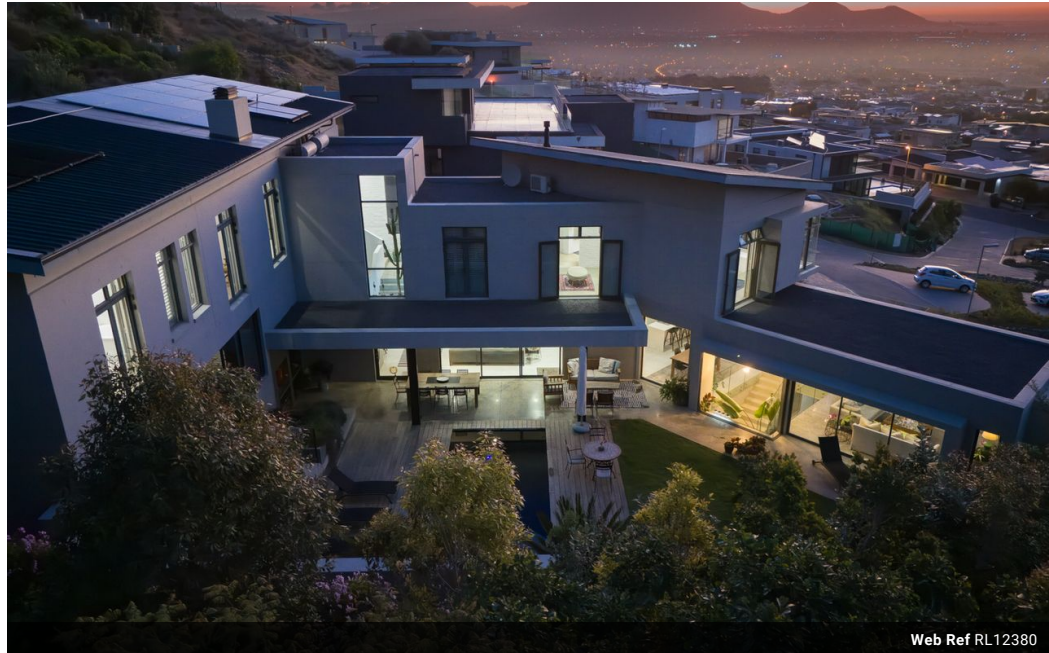
coenradw@louwcoetzee.co.za

Contact Louw & Coetzee
Properties

021 0003488

35 Main Road, Durbanville

4 Bedroom House For Sale in Baronetcy Estate



Web Ref RL12380



R17,500,000

4 5 3

Monthly Bond Repayment R177,665.07

Calculated over 20 years at 10.75% with no deposit.

Transfer Costs R1,930,984.00 **Bond Costs** R118,035.00

These calculations are only a guide. Please ask your conveyancer for exact calculations.

Monthly Levy R2,152 **Monthly Rates** R7,282

Exquisite Designer Home with Unmatched Views in Baronetcy Estate

Perched high on the prestigious Platteklouf hills, this breathtaking multi-level residence in Baronetcy Estate offers an unparalleled luxury lifestyle with panoramic views stretching from Table Mountain to the Atlantic Ocean and Robben Island. Designed for those who demand both sophistication and comfort, this architectural masterpiece blends indoor and outdoor living seamlessly, making it perfect for both entertaining and relaxation.

From the moment you enter, you are welcomed by elegant interiors, soaring ceilings, and floor-to-ceiling windows that flood the home with natural light. The expansive living areas include a formal lounge with a fireplace, a family/TV room, and an open-plan dining space that leads out to a covered terrace with a built-in braai, heated pool, and private landscaped garden—all with spectacular sunset...

Features

Pets Allowed	Yes				
Interior		Exterior		Sizes	
Bedrooms	4	Garages	3	Floor Size	599m ²
Bathrooms	5	Security	Yes	Land Size	1,377m ²
Kitchens	1	Dom. Accom.	1		
Recep. Rooms	4	Pool	Yes		
Studies	1	Views	False		
Furnished	No				

Extras

24-Hour Manned CCTV Electric Fencing Entrance Hall Guest Toilet Scullery Built In Braai Open
Stoep Extra Parking Multi Storey North Security Estate Contemporary Blinds TV Port Air
Conditioner Aluminium Window Fireplace Satellite Dish Built In Bar Fibre Gas Bottle Linen
Cupboard