



Andre Cilliers
Non-Principal Property Practitioner
Registered with PPRA (FFC 070 906 8)
0795172927
andrec@louwcoetzee.co.za



Jessica Kolver-Louw
Non-Principal Property Practitioner
Registered with PPRA (FFC FFC -11 705 81)
0748882132
jessica@louwcoetzee.co.za

Contact Louw & Coetzee Properties

021 0003488

35 Main Road, Durbanville

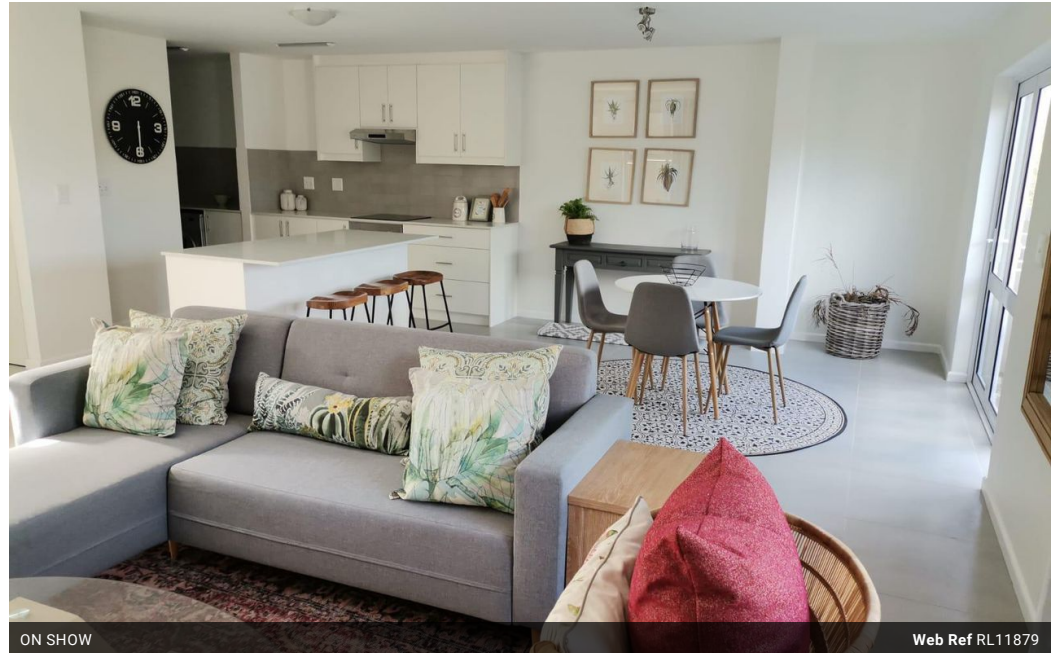
On Show

🕒 15:00 to 17:00

📅 Sunday, 04 May 2025

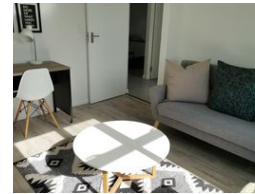
Directions

4 Bedroom House For Sale in Honeydew Country Estate



ON SHOW

Web Ref RL11879



R3,400,000

🛏️ 4 🛁 2.5 🚗 2

Monthly Bond Repayment R35,094.41

Calculated over 20 years at 11% with no deposit.

Transfer Costs R208,547.00 **Bond Costs** R45,955.00

These calculations are only a guide. Please ask your conveyancer for exact calculations.

Monthly Levy R1,475 **Monthly Rates** R1,225

Secure 4-bedroom family home for sale in Honeydew Country Estate

Situated in the popular Honeydew Country Estate, this four-bedroom, pet-friendly family home is in a truly excellent location, within walking distance from various renowned schools.

The residence features four bedrooms, 2.5 bathrooms, an open-plan dining room, and lounge, as well as an open stoep to enjoy the outdoors. The kitchen has a gas oven, centre island, extractor fan, granite tops, and a separate scullery; while the double garage has automated doors and offers direct access to the home.

Welcome extras include a solar geyser, fibre-readiness, 2 air-conditioners.

Residents of Honeydew Country Estate enjoy access to an...

Features

Pets Allowed Yes

Interior

Bedrooms	4
Bathrooms	2.5
Kitchens	1
Recep. Rooms	2
Furnished	No

Exterior

Garages	2
Security	Yes
Pool	Yes
Views	False

Sizes

Floor Size	177m²
Land Size	187m²

Extras

Guest Toilet Air Conditioner TV Port Double Storey Extra Parking 24Hour Manned Estate Aluminium Window Prepaid Electricity Solar Geyser Fibre