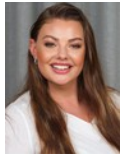




Andre Cilliers
Non-Principal Property Practitioner
Registered with PPRA (FFC 070 906 8)
0795172927
andrec@louwcoetzee.co.za



Jessica Kolver-Louw
Non-Principal Property Practitioner
Registered with PPRA (FFC FFC -11 705 81)
0748882132
jessica@louwcoetzee.co.za



Deoné Lötter
Candidate Property Practitioner
Registered with PPRA (FFC 121 949 7)
066 289 7885
deonev@louwcoetzee.co.za

Contact Louw & Coetzee Properties

021 0003488

35 Main Road, Durbanville

2 Bedroom Apartment For Sale in Honeydew Country Estate



Web Ref RL12521



R1,589,000

2 1

Monthly Bond Repayment R16,131.99

Calculated over 20 years at 10.75% with no deposit.

Transfer Costs R48,455.00 **Bond Costs** R28,990.00

These calculations are only a guide. Please ask your conveyancer for exact calculations.

Modern Apartment in the Cape Winelands – No Transfer Fees!

Be the first to own a brand-new apartment in the heart of the Cape Winelands.

Honeydew Country Estate offers modern, secure living with a strong sense of community—perfect for first-time buyers, young families, or those looking to scale down.

This move-in-ready apartment features:

- 2 bedrooms & 1 bathroom
- Seamless indoor-outdoor living
- Modern finishes, including an oven
- Full access to estate amenities: mini soccer field, putt-putt, tennis & netball walls, and a communal pool
- No transfer or bond fees!

Enjoy stylish living in a pet- and child-friendly estate with scenic mountain views and open green spaces. Conveniently located near shops, schools, hospitals, and with easy access to the N1—just minutes from central Paarl.

Contact us today to book your viewing and secure your unit!

*Disclaimer: Images shown are of a...

Features

Interior

Bedrooms	2
Bathrooms	1
Kitchens	1
Recep. Rooms	1
Furnished	No

Exterior

Carports / Parkings	2
Security	Yes
Pool	Yes
Views	False

Sizes

Floor Size	56m²
------------	------

Extras

Garden Open Plan Kitchen Security Estate Fenced Pool