



**Marelize Smith**  
Non-Principal Property Practitioner  
Registered with PPRA (FFC 074 949 5)  
0825784641  
marlizes@louwcoetzee.co.za



**Anneke Snyman**  
Non-Principal Property Practitioner  
Registered with PPRA (FFC 124 211 8)  
0825670991  
annekes@louwcoetzee.co.za

Contact Louw & Coetzee Properties

021 0003488

35 Main Road, Durbanville

## On Show



15:00 to 17:00



Sunday, 06 July 2025

### Directions

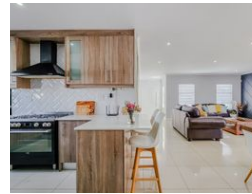
## 3 Bedroom House For Sale in Viking Village

NEW



ON SHOW, SOLE MANDATE

Web Ref RL12604



R3,190,000



3



2



2

**Monthly Bond Repayment** R32,385.80

Calculated over 20 years at 10.75% with no deposit.

**Transfer Costs** R183,279.00 **Bond Costs** R44,070.00

These calculations are only a guide. Please ask your conveyancer for exact calculations.

**Monthly Rates** R908

### Modern, Secure & Move-In Ready Family Home with Braai Room and Solar Power

**Sole Mandate:** This immaculate 3-bedroom home offers the perfect blend of style, functionality, and peace of mind. Designed for modern family living, the property features two sleek bathrooms — a full family bathroom and a main en suite — both finished with contemporary fittings.

The spacious lounge, fitted with a Samsung WiFi-enabled aircon, flows seamlessly into the open-plan dining area. An added bonus is the separate braai room — ideal for year-round entertaining, regardless of the weather.

At the heart of the home is a beautifully modern kitchen with Caesarstone countertops, a gas stove, and a separate scullery to keep things...

## Features

**Pets Allowed** Yes

### Interior

|              |    |
|--------------|----|
| Bedrooms     | 3  |
| Bathrooms    | 2  |
| Kitchens     | 1  |
| Recep. Rooms | 3  |
| Furnished    | No |

### Exterior

|          |       |
|----------|-------|
| Garages  | 2     |
| Security | Yes   |
| Pool     | Yes   |
| Views    | False |

### Sizes

|            |                   |
|------------|-------------------|
| Floor Size | 182m <sup>2</sup> |
| Land Size  | 500m <sup>2</sup> |

### Extras

Residential Freestanding Scullery Built In Braai Extra Parking Air Conditioner TV Port Open Plan Aluminium Window Prepaid Electricity Fibre Wall Heating Panels