



Marelize Smith
Non-Principal Property
Practitioner
Registered with PPRA
(FFC 074 949 5)
0825784641
marlizes@louwcoetzee.co.za

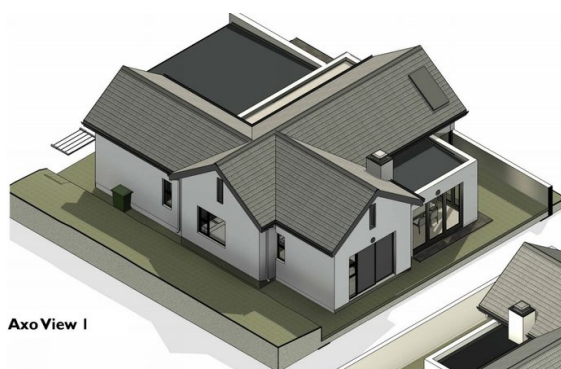
Contact Louw & Coetzee
Properties

021 0003488

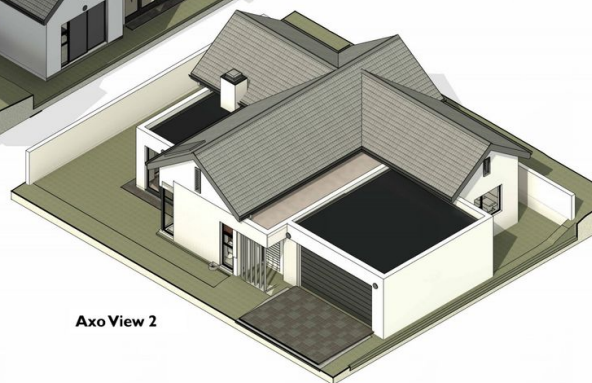
35 Main Road, Durbanville

3 Bedroom House For Sale in Graanendal

Erf 19330 – Type 2A



Axo View 1



Axo View 2



R4,300,000

3 Bedrooms 2.5 Bathrooms 2 Garages

Monthly Bond Repayment R43,654.84

Calculated over 20 years at 10.75% with no deposit.

Transfer Costs R318,841.00 Bond Costs R55,380.00

These calculations are only a guide. Please ask your conveyancer for exact calculations.

Monthly Levy R2,230 Monthly Rates R1,000

Modern 3-Bedroom Single-Level Home in Graanendal, Durbanville – No Transfer Duty!

Phase 2 Now Available – Secure Your Dream Home Today!

Experience secure and stylish living in Graanendal Security Estate, where you can own a brand-new home with no transfer duty!

This pet-friendly estate offers 24-hour security, advanced access control, beautifully landscaped gardens, and scenic paved trails for walking and running.

Baviaansicht is an exclusive new development featuring 30 thoughtfully designed two- and three-bedroom homes. With Phase 2 now launched, don't miss your chance to secure a unit! Estimated completion: September 2025.

This elegantly designed single-level home features open-plan living areas, a stylish modern kitchen, a dedicated braai room, and a beautifully landscaped garden. It boasts three spacious bedrooms, with the main bedroom offering an en-suite bathroom with a shower, while the other...

Features

| | | | | | |
|---|-----|-----------------|-------|--------------|-------|
| Pets Allowed | Yes | | | | |
| Interior | | Exterior | | Sizes | |
| Bedrooms | 3 | Garages | 2 | Floor Size | 181m² |
| Bathrooms | 2.5 | Security | Yes | Land Size | 307m² |
| Kitchens | 1 | Pool | No | | |
| Recep. Rooms | 3 | Views | False | | |
| Furnished | No | | | | |
| Extras | | | | | |
| Prepaid Electricity Security Estate Burglar Bars Aluminium Window Built In Braai 24-Hour Manned Entrance Hall Extra Parking Simplex Modern Open Plan Fireplace Linen Cupboard Solar Heating | | | | | |