



Johan de Bruyn
082 881 2011
johan@louwcoetzee.co.za



Coenrad Willemse
Non-Principal Property
Practitioner
Registered with PPRA

(FFC 113 600 5)
0843856453
coenradw@louwcoetzee.co.za



Johann Rosenbrock
Non-Principal Property
Practitioner
Registered with PPRA
(FFC 117 575 1)
072 222 9562

johannr@louwcoetzee.co.za

**Contact Louw & Coetzee
Properties**

021 0003488

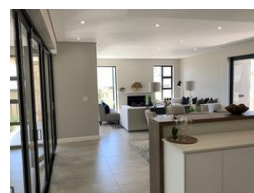
35 Main Road, Durbanville

4 Bedroom Townhouse For Sale in Clara Anna Fontein

UNDER OFFER



Web Ref RL12504



R7,995,000

🛏 4 🚿 3.5 🏠 2

Monthly Bond Repayment R81,167.55

Calculated over 20 years at 10.75% with no deposit.

Transfer Costs R748,678.00 **Bond Costs** R75,285.00

These calculations are only a guide. Please ask your conveyancer for exact calculations.

Monthly Levy R2,896 **Monthly Rates** R2,889.8

Stylish Family Living in Prime Estate Location

This sophisticated double-storey townhouse offers modern living at its finest, with elegant finishes, spacious interiors, and thoughtful design throughout. Ideally located near green spaces, playparks, and beautifully landscaped communal areas, it's the perfect setting for relaxed family living.

The lower level features three generous living areas, including a formal lounge with a fireplace and a dining room that flow effortlessly into an enclosed braai room overlooking the garden—ideal for effortless entertaining.

A standout feature is the open-plan gourmet kitchen with engineered stone countertops, ample cabinetry, a centre island, gas hob, eye-level oven, extractor fan, and a separate scullery/laundry—designed for both beauty and functionality. A guest bedroom with en-suite and a separate guest toilet completes this...

Features

Pets Allowed Yes

Interior

Bedrooms	4
Bathrooms	3.5
Kitchens	1
Recep. Rooms	3
Studies	1
Furnished	No

Exterior

Garages	2
Security	Yes
Pool	No
Views	True

Sizes

Floor Size	302m ²
Land Size	375m ²

Extras

Security Estate Fibre Prepaid Electricity

