



Yolanda Uithaler
Candidate Property Practitioner
Registered with PPRA
(FFC 125 216 4)
0653220071
yolanda@louwcoetzee.co.za

Contact Louw & Coetzee Properties

021 0003488

35 Main Road, Durbanville

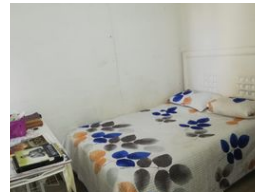
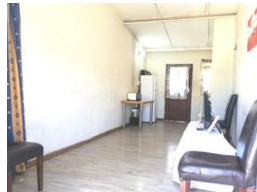
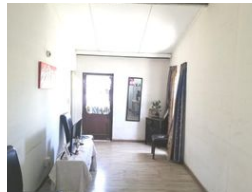
2 Bedroom House Sold in Greenville Garden City

SOLD



SOLE MANDATE

Web Ref RL12281



R350,000

2 1

Monthly Bond Repayment R3,553.30

Calculated over 20 years at 10.75% with no deposit.

Transfer Costs R16,346.00 **Bond Costs** R11,560.00

These calculations are only a guide. Please ask your conveyancer for exact calculations.

Monthly Rates R180

Charming Corner House with Endless Potential

Sole Mandate: Perfect for young couples or start-up families looking to grow, this delightful corner property offers a blend of comfort and convenience in the heart of Greenville Garden City.

Key Features:

- * 2 Bedrooms: Cozy and inviting spaces to make your own.
- * Open-Plan Living: Ideal for modern lifestyles and entertaining.
- * 1 Bathroom: Well-appointed for your needs.
- * Secure Property: Fully enclosed with vibracrete for added privacy and safety.

Prime Location:

- * Walking distance to the Satellite Police Station for peace of mind.
- * Close to both a high school and primary school, making it perfect for families.
- * Conveniently near the Day Hospital for your healthcare needs.

Don't miss out on this fantastic opportunity to make this house your home. Contact us today to arrange a viewing!

Features

Pets Allowed		Yes			
Interior				Exterior	
Bedrooms	2			Carports / Parkings	2
Bathrooms	1			Security	No
Kitchens	1			Pool	No
Recep. Rooms	1			Views	False
Furnished	No				
Extras				Sizes	
Freestanding South Aluminium Window Prepaid Electricity				Land Size	104m ²