



Coenrad Willemse
Non-Principal Property
Practitioner
Registered with PPRA
(FFC 113 600 5)
0843856453

coenradw@louwcoetzee.co.za

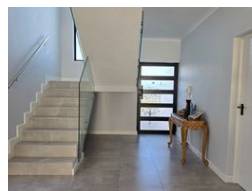
Contact Louw & Coetzee
Properties

021 0003488

35 Main Road, Durbanville

**SOLE MANDATE**

Web Ref RI 12500



R4,250,000

Monthly Bond Repayment R43,147.23

Calculated over 20 years at 10.75% with no deposit.

Transfer Costs R313.341.00 **Bond Costs** R55.380.00

These calculations are only a guide. Please ask your conveyancer for exact calculations.

Monthly Rates R1,070



4



3



12

Brand New Contemporary Home in Fast-Growing Sandown

Sole Mandate: This newly built corner home in Sandown offers a rare opportunity to buy into a rapidly developing and exciting area —while pricing is still at its most accessible.

With the surrounding neighbourhood expanding at a fast pace, this is the ideal moment to secure an established, move-in-ready home without the wait or uncertainty of buying off-plan. Best of all? This house is already a home!

Finished to an impressive standard, this home sets the tone for luxury living in the area. A large front door welcomes you into a spacious foyer that flows seamlessly into a spacious open plan living and entertainment areas. The heart of the home is the sleek kitchen, featuring a separate scullery with space for all your appliances. The kitchen and dining area seamlessly connect to the family lounge and braai room, complete with...

Features

Pets Allowed	Yes				
Interior		Exterior		Sizes	
Bedrooms	4	Garages	2	Floor Size	230m²
Bathrooms	3	Security	Yes	Land Size	287m²
Kitchens	1	Pool	No		
Recep. Rooms	2	Views	False		
Studies	1				
Furnished	No				

Extras

Entrance Hall Covered Patio Extra Parking Scullery Double Storey Blinds Guest Toilet Prepaid Electricity Fibre Gas Bottle Linen Cupboard Aluminium Window Alarm System