



**Christine Bester**  
Non-Principal Property  
Practitioner  
Registered with PPRA  
(FFC 119 263 7)  
0833917167  
christineb@louwcoetzee.co.za

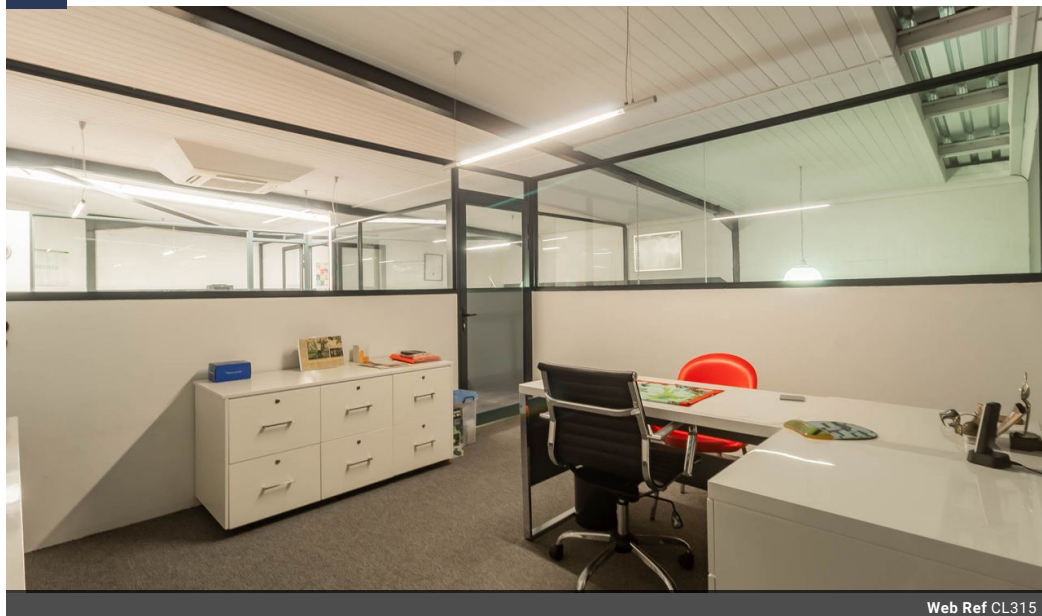
Contact Louw & Coetzee  
Properties

021 0003488

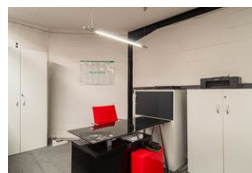
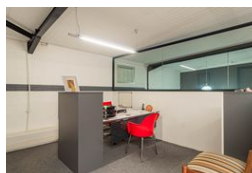
35 Main Road, Durbanville

## 205m<sup>2</sup> Co-working Space To Let in Parow Industrial

NEW



Web Ref CL315



R138 per m<sup>2</sup>

Gross Monthly Rental R28,290 Excl. VAT

0 2

### Prime 205m<sup>2</sup> Office & Warehouse Space – Millennium Park, Parow

Looking for a professional, well-maintained business space in the heart of Parow Industrial? This unit at Millennium Park offers the perfect combination of office, meeting, and warehouse facilities in a secure, well-managed business park.

Features Include:

- ±205m<sup>2</sup> split between modern offices and warehouse space
- Reception, boardroom, 4 upstairs private offices, kitchenette, 2 toilets
- Central meeting/lounge area for staff or clients
- Warehouse section with roller-shutter access for deliveries
- 2 dedicated parking bays plus additional loading space
- 24-hour access with biometric security controls
- High-visibility signage opportunities

Rental: R24,600 + VAT per month (R120/m<sup>2</sup>) – Rates, levies, security, and parking included. Utilities for tenant's account.

Occupation: 1 October 2025 or sooner if required.

### Features

**Zoning** Industrial

**Exterior**

Security Yes  
Open Parking Bays 2

**Sizes**

Floor Size 205m<sup>2</sup>

