

# Honeydew

PAARL COUNTRY ESTATE

---

## APARTMENTS

**Jessica Kolver-Louw**

074 888 2132

[jessica@louwcoetzee.co.za](mailto:jessica@louwcoetzee.co.za)

**Tessa Rossouw**

079 416 7939

[tessar@louwcoetzee.co.za](mailto:tessar@louwcoetzee.co.za)




**André Cilliers**

079 517 2927

[andrec@louwcoetzee.co.za](mailto:andrec@louwcoetzee.co.za)

 **LOUW &  
COETZEE**  
REGISTERED WITH THE PPRA **PROPERTIES**

[www.lcproperties.co.za](http://www.lcproperties.co.za)

PLAN TYPE	LEVEL	UNIT				SIZE m <sup>2</sup>	BALCONY m <sup>2</sup>	TOTAL	PARKING #	
1	GROUND	7	1	1	1	45	2.5	R1 225 000	9	
		8	1	1	1	45	2.5	SOLD	23	
	FIRST	19	1	1	1	45	2.5	R1 225 000	17	
		20	1	1	1	45	2.5	SOLD	18	
2	GROUND	1	2	1	1	56	4	SOLD	1	
		2	2	1	1	56	4	R1 439 000	2	
		3	2	1	1	56	4	SOLD	3	
		4	2	1	1	56	4	R1 439 000	4	
		5	2	1	1	56	4	R1 439 000	5	
		6	2	1	1	56	4	SOLD	6	
		9	2	1	1	56	4	SOLD	15	
		10	2	1	1	56	4	R1 439 000	16	
		11	2	1	1	56	4	R1 439 000	21	
		12	2	1	1	56	4	SOLD	22	
		13	2	1	1	56	4	SOLD	26	
		14	2	1	1	56	4	SOLD	27	
		FIRST	15	2	1	1	56	4	SOLD	10
			16	2	1	1	56	4	R1 349 000	11
	17		2	1	1	56	4	SOLD	20	
	18		2	1	1	56	4	R1 349 000	19	
	21		2	1	1	56	4	R1 349 000	12	
	22		2	1	1	56	4	R1 349 000	14	
	23		2	1	1	56	4	R1 349 000	24	
	24		2	1	1	56	4	SOLD	25	
	SECOND	25	2	1	1	56	4	SOLD	7	
		26	2	1	1	56	4	SOLD	8	
		27	2	1	1	56	4	R1 389 000	13	
		28	2	1	1	56	4	SOLD	28	

Additional parking bays available: R30 000 per parking bay

Jessica Kolver-Louw  
074 888 2132

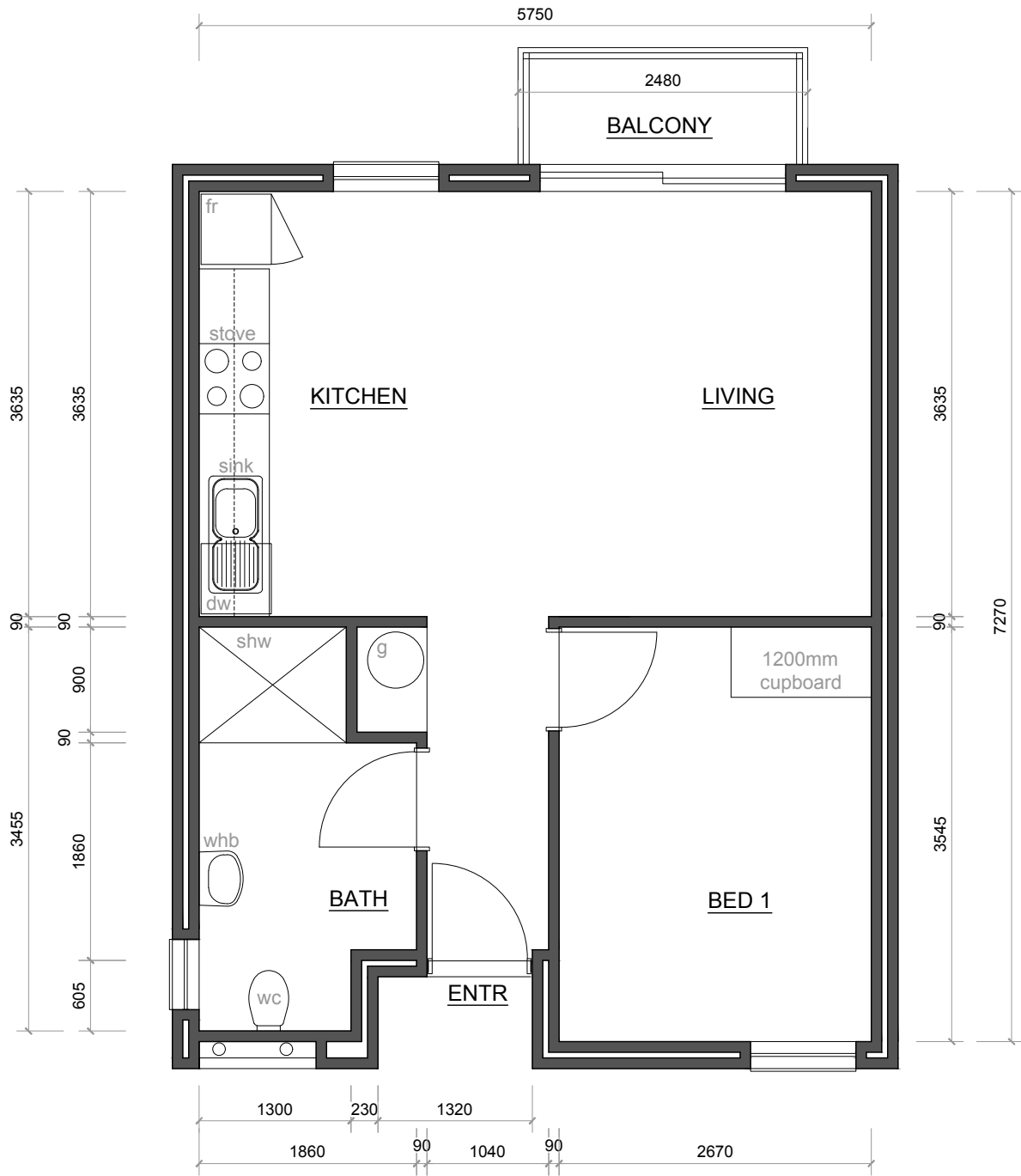
jessica@louwcoetzee.co.za

Tessa Rossouw  
079 416 7939

tessar@louwcoetzee.co.za

André Cilliers  
079 517 2927

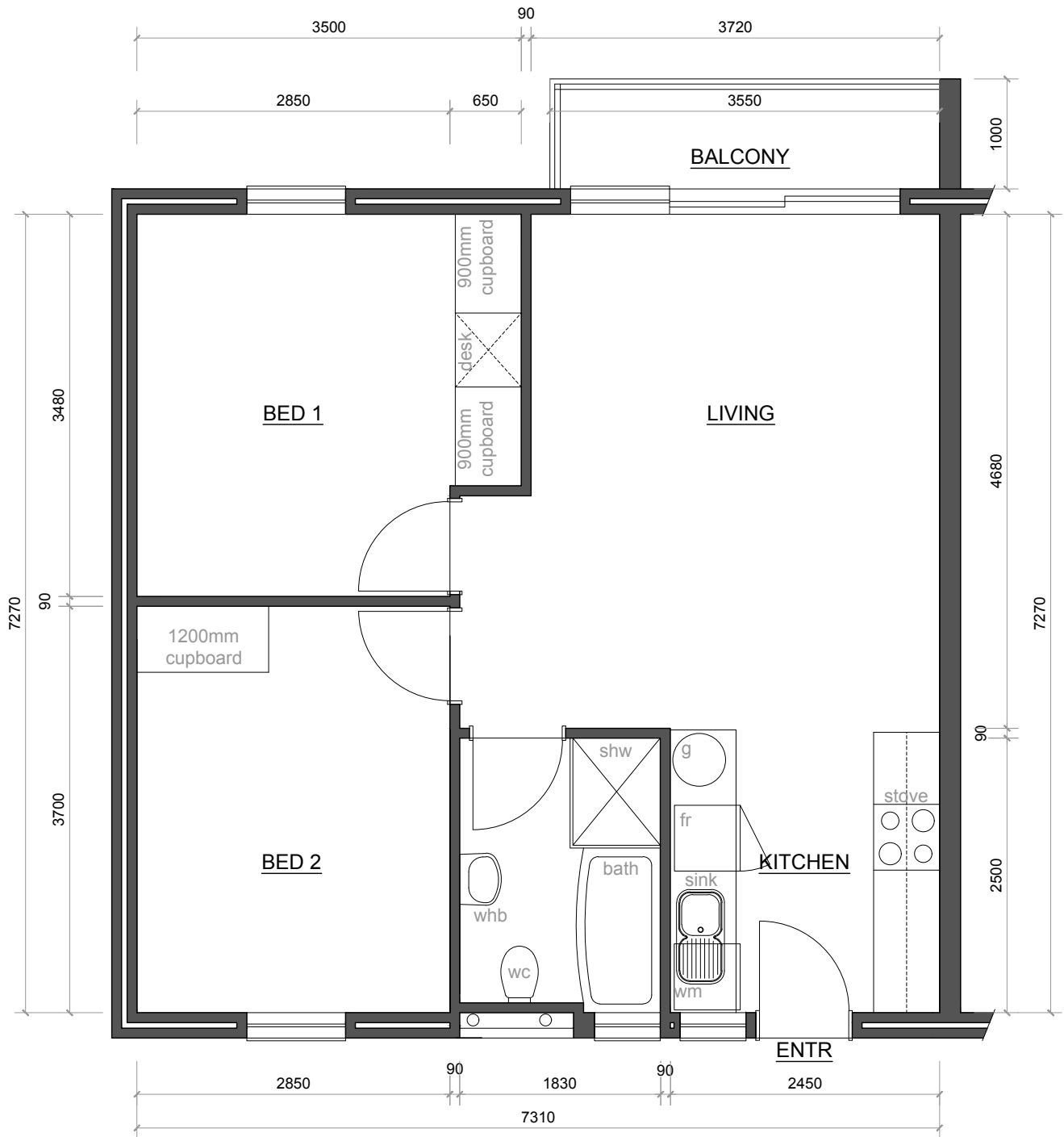
andrec@louwcoetzee.co.za



APARTMENT - TYPE 1



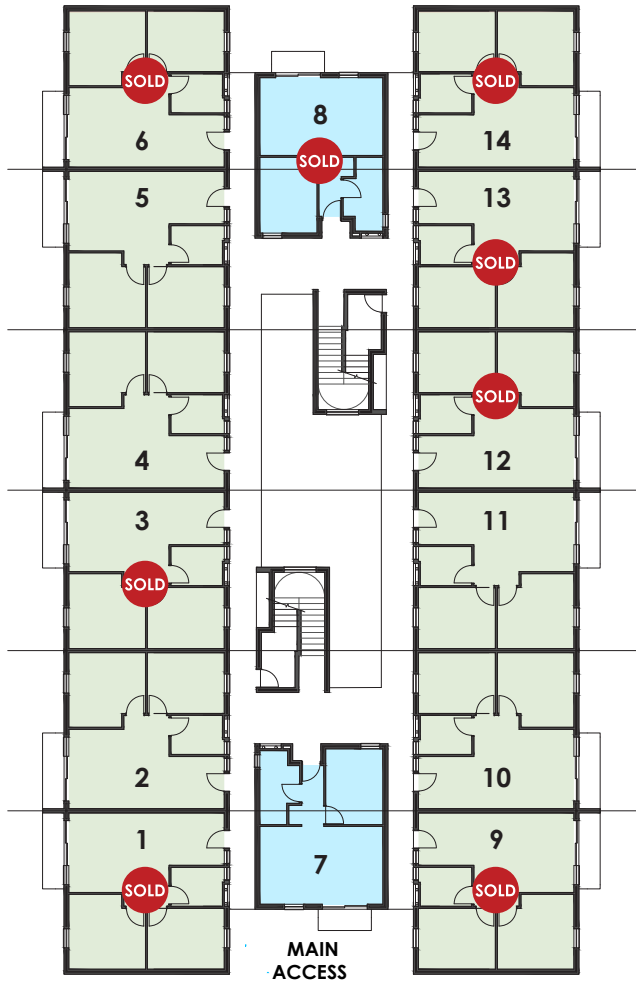
PLAN TYPE				SIZE	BALCONY
1	1	1	1	45m <sup>2</sup>	2.5m <sup>2</sup>



APARTMENT - TYPE 2

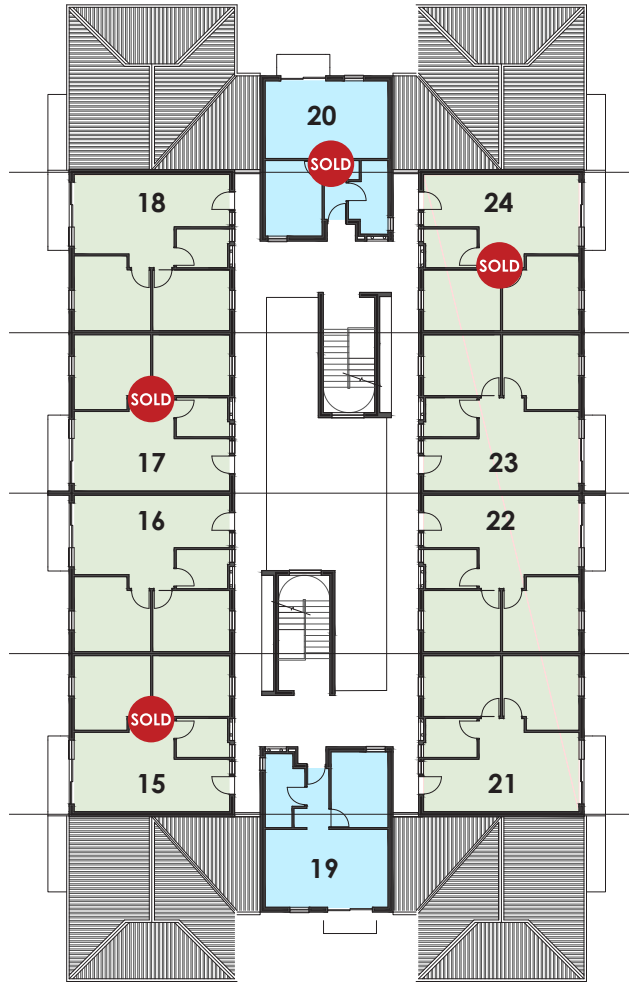


PLAN TYPE				SIZE	BALCONY
2	2	1	1	56m <sup>2</sup>	4m <sup>2</sup>



### GROUND FLOOR

UNIT TYPE 1	2
UNIT TYPE 2	12



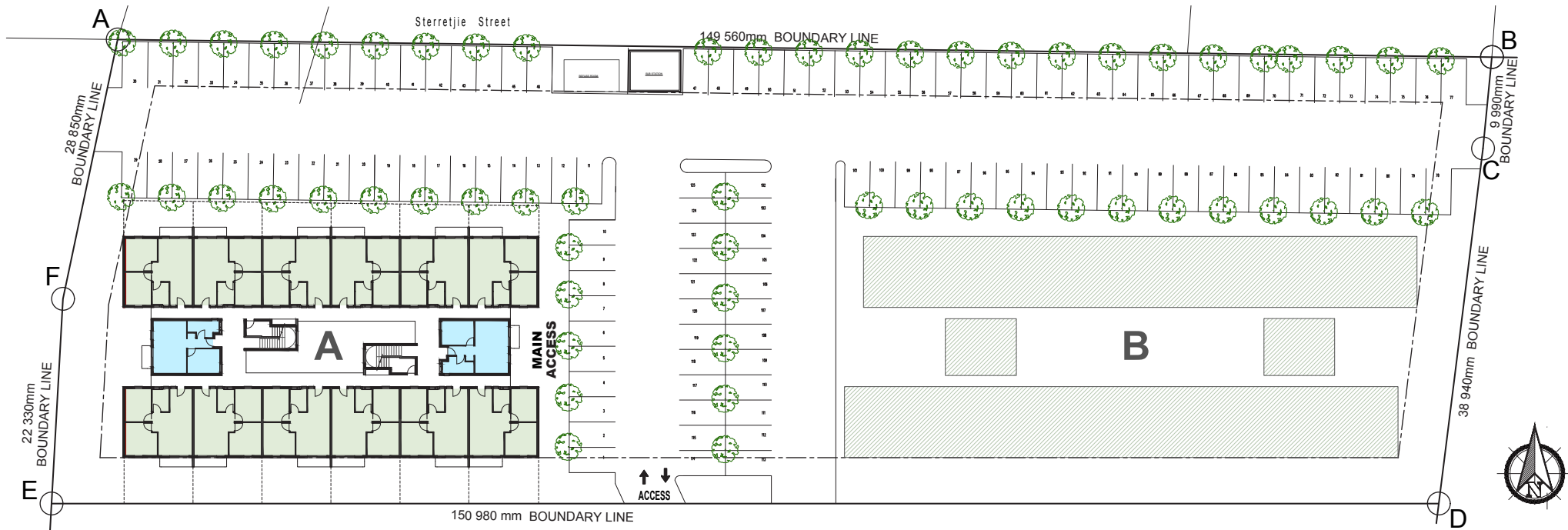
### FIRST FLOOR

UNIT TYPE 1	2
UNIT TYPE 2	8



### SECOND FLOOR

UNIT TYPE 1	0
UNIT TYPE 2	4



**BLOCK A**

GROUND FLOOR	14
FIRST FLOOR	10
SECOND FLOOR	8
<b>TOTAL UNITS</b>	<b>28</b>

**BLOCK B**

GROUND FLOOR	18
FIRST FLOOR	14
SECOND FLOOR	4
<b>TOTAL UNITS</b>	<b>36</b>